

LEEP1 Mentor Consultant (LEEP1 Inclusion For Employment (LIFE))



This is a job description for the role of a LEEP1 Mentor Consultant.

This document will tell you what you need to do if you get this job.



It will also be used by your manager to see if you are doing your job well.

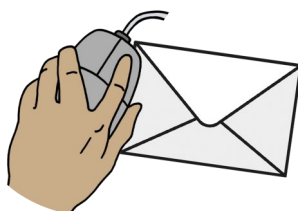


The person who gets this job will be working on LEEP1 Involvement For Employment.

Hazel Bailey will be your manager.



To find out more about LEEP1 Involvement for Employment go to the job advert ([link](#))



If you need this document with a different coloured background please contact jobs@advonet.org.uk

What Is The Job?



Expert Through Lived Experience.



Involving Others.



Co-Production.



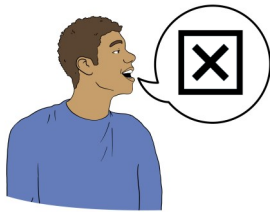
Supporting Others.



Expert Through Lived Experience



Sharing ideas they have about how things could be better.



Talking about problems and issues they have faced to do with their learning disability.



Giving their point of view.



Speaking up when there is a problem.



To guide the project through lived experience.



Involving Others



Help people in the learning disability community to learn more about employment.



Lead the consultancy group.



Keep in contact with people with lived experience involved in the project.



To interview people with lived experience of a learning disability with support.



To lead focus groups with support.

Co-Production



To work with other people on the team to make documents.



To work with other people on the team in making training.



To involve others in doing this work.





Supporting Others



To help people who are taking part in the project.



To give people advice.



To listen to people .

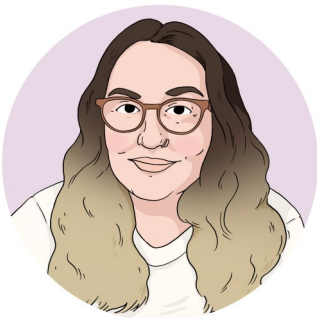
Who You Will be Working With



Hazel Bailey—Your Manager

Laura Dalton—LEEP1
Coordinator

Alex Toothill—Learning
Disabilities Services
Manager



Imogen Day—Project
Coordinator



Jimmy Knott—Projects
Team Leader